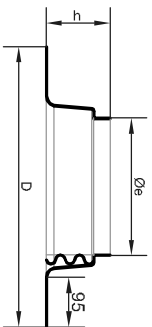


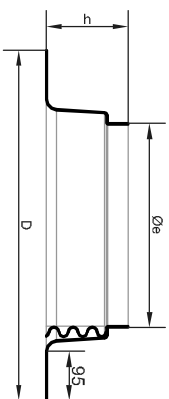
TD 5-1: FLASHINGS

Flat Al flashing Ø250
cod. 25SATO1/25SATO2



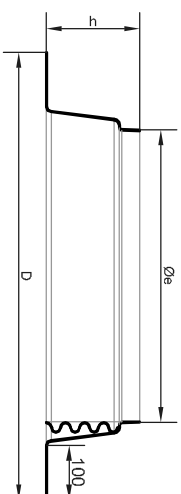
SOLARSPOT	CODE	D	Øe	h	Thickness
Ø250	25SAPO1	538	264+/-1	123+/-1	2.0
	25SAPO2				

Flat Al flashing Ø375
cod. 38SAPO1/38SAPO2



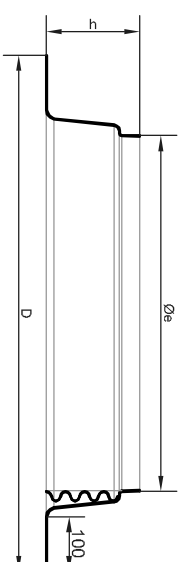
SOLARSPOT	CODE	D	Øe	h	Thickness
Ø375	38SAPO1	670	392+/-1	158+/-1	2.0
	38SAPO2				

Flat Al flashing Ø530
cod. 53SAPO1/53SAPO2



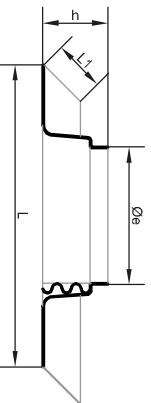
SOLARSPOT	CODE	D	Øe	h	Thickness
Ø530	53SAPO1	860	562+/-1	180+/-1	2.0
	53SAPO2				

Flat Al flashing Ø650
cod. 65SAPO1/65SAPO2



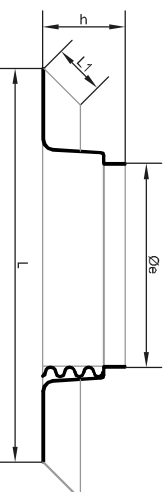
SOLARSPOT	CODE	D	Øe	h	Thickness
Ø650	65SAPO1	1000	683+/-1	180+/-1	2.0
	65SAPO2				

Polypropylene flat flashing Ø250
cod. 25SAPO1/25SAPO2



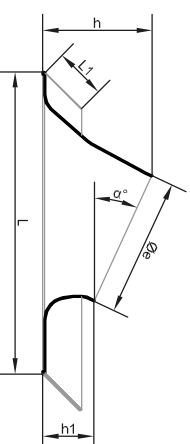
SOLARSPOT	CODE	L	L1	Øe	h	Thickness
Ø250	25SAPO1	580	492	264+/-1	123+/-1	2.0
	25SAPO2					

Polypropylene flat flashing Ø375
cod. 38SAPO1/38SAPO2



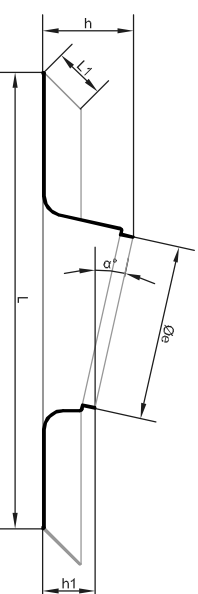
SOLARSPOT	CODE	L	L1	Øe	h	Thickness
Ø375	38SAPO1	756	666	392+/-1	158+/-1	2.0
	38SAPO2					

Polypropylene pitched flashing
Ø250 - cod. 25POPSN
Ø375 - cod. 38POPSN3
to compensate an angle of 20°-25°



SOLARSPOT	CODE	L	L1	h	h1	Thickness	Øe	α
Ø250	25POPSN	58	48	210+/-	98+/-	2.0	266+/-	5°
		0	5	-3	3			
Ø375	38POPSN3-2	(*)						
		(*)						
Ø375	38POPSN3-2	0						

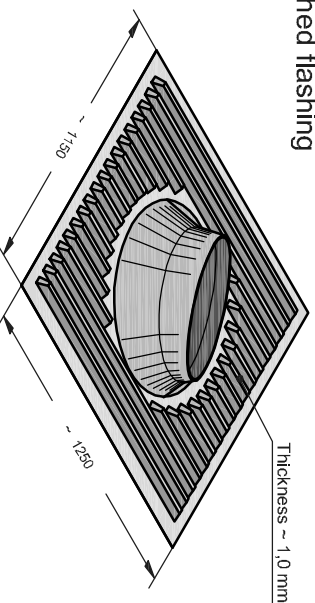
Polypropylene pitched flashing
Ø530 - cod. 53POPSN
Ø650 - cod. 65POPSN
to compensate an angle of 10°-15°



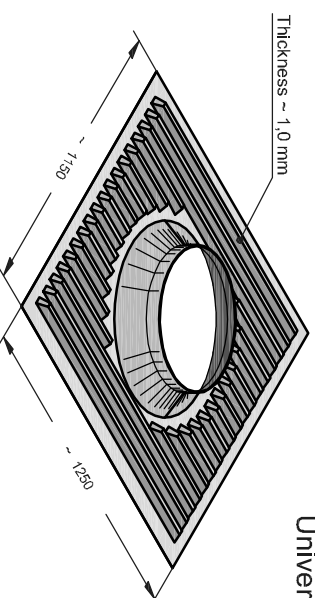
SOLARSPOT	CODE	L	L1	h	h1	Thickness	Øe	α
Ø530	53POPSN	1460	1260	290+/-3	166+/-3	3.0	563+/-1	12.5°
		650	650	310+/-3	166+/-3			

Universal sheet for pitched flashing

cod.25UPM
cod.38UPM (*)
cod.53UPM
cod.65UPM



Thickness ~ 1,0 mm



Universal sheet for flat flashing
cod.25USM
cod.38USM

(*): see "TD 5-2: PITCHED FLASHING 38POPSN3

The company reserve, according to law, the ownership of this drawing; don't reproduce without our authorization