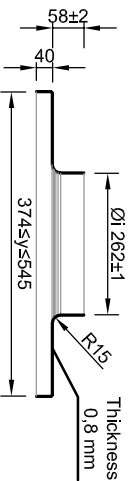
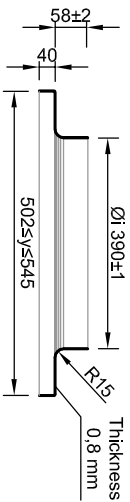


TD 5-4: SQUARE FLAT FLASHINGS

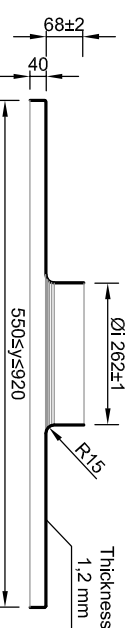
25SQ116 - Square flashing for Solarspot® Ø250 (base: 625 x 625)



38SQ11 - Square flashing for Solarspot® Ø375 (base: 625 x 625)



25SQ12 - Square flashing for Solarspot® Ø250 (base: 1000 x 1000)

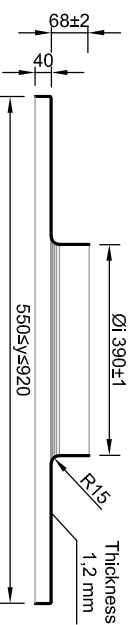


25SQ116-2 - Insulated square flashing

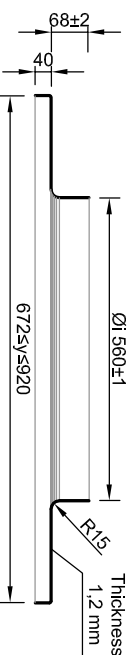
38SQ11-2 - Insulated square flashing

25SQ12-2 - Insulated square flashing

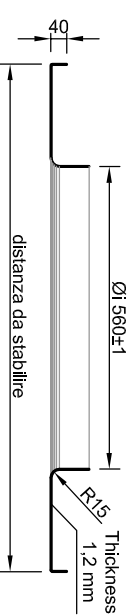
38SQ12 - Square flashing for Solarspot® Ø375 (base: 1000 x 1000)



53SQ12 - Square flashing for Solarspot® Ø530 (base: 1000 x 1000)



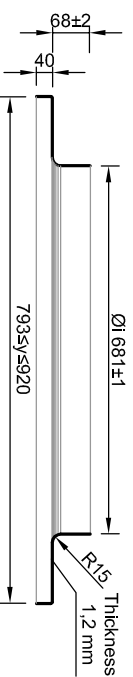
53SQ12 - Possible solution for square flashing for Solarspot® Ø530 (base: 1000 x 1000)



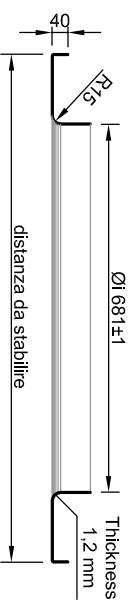
38SQ12-2 - Insulated square flashing

53SQ12-2 - Insulated square flashing

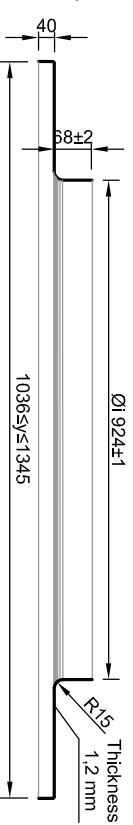
65SQ12 - Square flashing for Solarspot® Ø650 (base: 1000 x 1000)



65SQ12 - Possible solution for square flashing for Solarspot® Ø650 (base: 1000 x 1000)



90SQ12 - Square flashing for Solarspot® Ø900 (base: 1425 x 1425)



65SQ12-2 - Insulated square flashing

90SQ12-2 - Insulated square flashing

N.B.: All the base dimensions are the minimum and the maximum that can be done, with a bend of 40mm (STANDARD). However, they may vary if different bend dimensions are needed and/or in case of employing the support made by Solarspot International srl (support-costiere, see TD5-6). For installations that foresee other type of support, apart from the bend height, the variation of the flashing base dimensions must be evaluated case by case with the factory.

